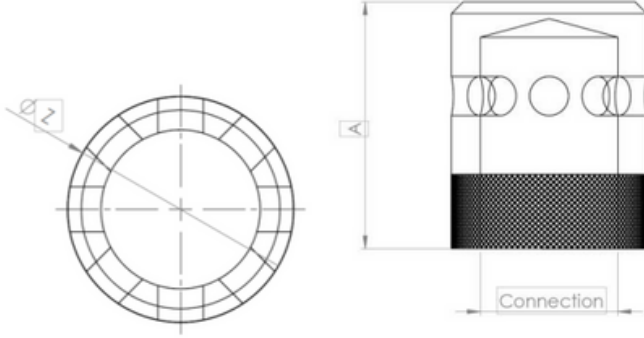


# Technical Datasheet

Chemical gas systems - FSL 1230™ / FSL 5112™



## Discharge Nozzles 360° & 180° - Multiple Part Numbers



Chemical Nozzle dimensions



Chemical Nozzle 360° & 180°

### Nozzle Technical Specifications

Dimension	Length, mm					
	1/2" DN15	3/4" DN20	1" DN25	1 1/4" DN32	1 1/2" DN40	2" DN50
A	34	41	51	63	71	103
ZØ	24	32	40	50	60 *	75 *
Connection	1/2" BSP	3/4" BSP	1" BSP	1 1/4" BSP	1 1/2" BSP	2" BSP
Part Number 180°	NF 251521	NF 252021	NF 252521	NF 253221	NF 254021	NF 255021
Part Number 360°	NF 251522	NF 252022	NF 252522	NF 253222	NF 254022	NF 255022
Connection	1/2" NPT	3/4" NPT	1" NPT	1 1/4" NPT	1 1/2" NPT	2" NPT
Part Number 180°	NF 251521N	NF 252021N	NF 252521N	NF 253221N	NF 254021N	NF 255021N
Part Number 360°	NF 251522N	NF252022N	NF 252522N	NF 253222N	NF 254022N	NF 255022N

Material: Brass (**Nickel Plating available on special order**)

Identification: Part number on the nozzle body & orifice sizes are stamped on bottom face of the nozzle.

Suitable for indoor applications.

**Must be fitted using PTFE tape.**

Visually check every 6 months for blockages, damages or corrosion.